

## Establishing a Secure AliceStreet Meeting

Version 1.8.1028  
March 18, 2008

**AliceStreet**  
Conference Center



Put a  
**real** conference room  
on your **desktop...**

IBM Server **Proven**

## Table of Contents

1.	AliceStreet Secure Channel.....	3
1.1	Introduction.....	3
1.2	Advantages.....	3
1.3	Encryption Overview .....	4
2.	Connecting to a secure AliceStreet Conference Center.....	5
2.1	Installing the Secure Channel client.....	5
2.2	Connecting the Secure Channel client.....	9
2.3	Verifying your Secure Channel connection.....	13

# 1. AliceStreet Secure Channel

## 1.1 Introduction

AliceStreet Secure Channel is a completely encrypted SSL VPN channel running from the users PC to the AliceStreet Conference Center. The system supports SSL VPN and provides the secure channel between the AliceStreet client application and the AliceStreet Conference Center.

There are two types of secure connections for AliceStreet.

- Enterprise users who have installed AliceStreet servers within their own operating environment. Please contact your Administrator for your secure connection details. AliceStreet solutions will work with most VPN vendor appliances from major manufacturers. If the Enterprise user is not operating an appliance based VPN, then AliceStreet Secure Channel can be deployed on CPE or be hosted in one of AliceStreet's Secure Global Conference Centres.
- Licensed users who are subscribing to AliceStreet solutions located in one of AliceStreet's Secure Global Conference Centres. The following applies to all users in this category including any on demand pay as you go users.

AliceStreet is using Secure Sockets Layer (SSL) as cryptographic protocols that provide secure communications, for the AliceStreet application, on the Internet for connecting to AliceStreet Conference Centres around the world.

Securing only AliceStreet applications allows the user to use all of his or her other regular applications while in an AliceStreet Conference. All that the user requires is to be able to browse the internet using port 443 or HTTPS sites with authorization to use HTTPS, SSL, UDP and TCP protocols. In that way he can connect from his company through the firewall to the SSL VPN and establish an AliceStreet meeting.

AliceStreet Secure Channel uses appliances from SonicWall where the customer is not using their own VPN appliances for remote communications. The appliances AliceStreet has chosen have been selected for their ability to deal with the following technical concerns:

- Application Encryption
- Compatibility to the already heavily compressed data generated by AliceStreet
- Tight integration to authentication databases
- Latency
- Ease of use
- MTBF
- Stability
- Low bandwidth overhead

## 1.2 Advantages

# AliceStreet Conference Center

A real conference room on your desktop

AliceStreet Secure Channel rounds out the AliceStreet solution and assists in the overall technical mission in delivering to the marketplace a secure audio, video and data communications solution. The technical advantages:

- Multipoint video (up to 16 people simultaneously)
- Single secure port access
- Fully encrypted conferencing
- Fully encrypted data collaboration tools.
- Low user bandwidth with encryption
- Low latency with encryption

## 1.3 Encryption Overview

Encryption enables users to encode data, making it secure from unauthorized viewers. Encryption provides a private and secure method of communication over the Internet.

A special type of encryption known as Public Key Encryption (PKE) comprises a public and a private key for encrypting and decrypting data. With public key encryption, an entity, such as a secure Web site, generates a public and a private key. A secure Web server sends a user accessing the Web site a public key. The public key allows the user's Web browser to decrypt data that had been encrypted with the private key. The user's Web browser can also transparently encrypt data using the public key and this data can only be decrypted by the secure Web server's private key. Public key encryption allows the user to confirm the identity of the Web site through an SSL certificate.

To prevent unauthorized eavesdropping, AliceStreet uses the PKE protocol to allow the AliceStreet applications to communicate across a network in a way designed to prevent eavesdropping. PKE provides endpoint authentication and communications privacy over the Internet using cryptography.

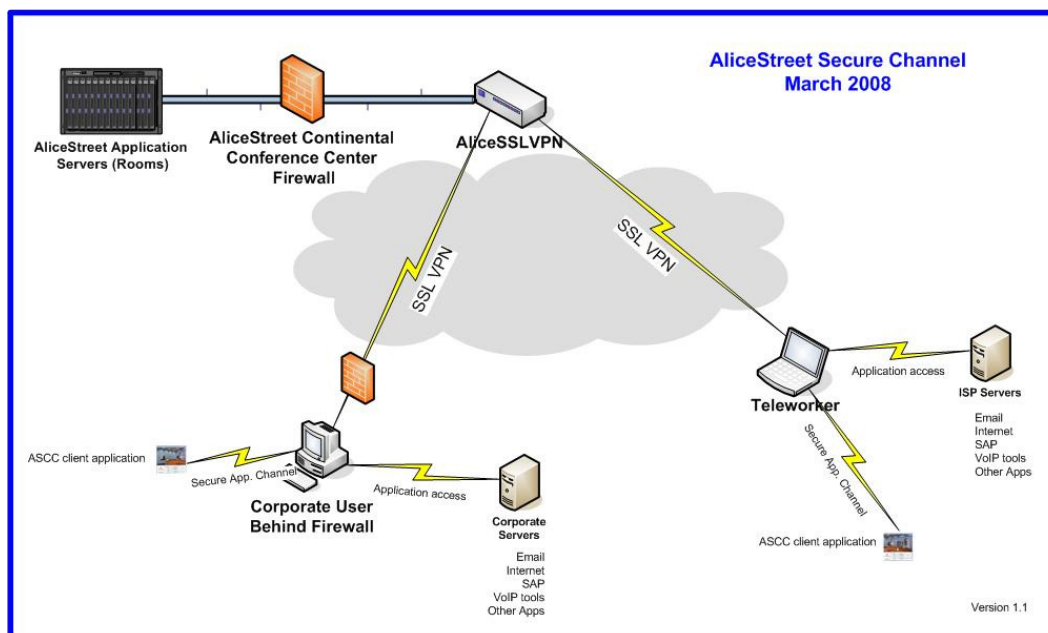


Figure 2.0 AliceStreet Secure Channel

# AliceStreet Conference Center

A real conference room on your desktop

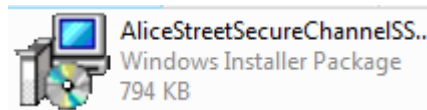
## 2. Connecting to a secure AliceStreet Conference Center

To connect to a secure AliceStreet Conference Center the first time, you will need to download and install a small client to affect the secure channel from you to the Conference Center. AliceStreet has selected SonicWall to bring you the easiest, behind the firewall secure videoconferencing.

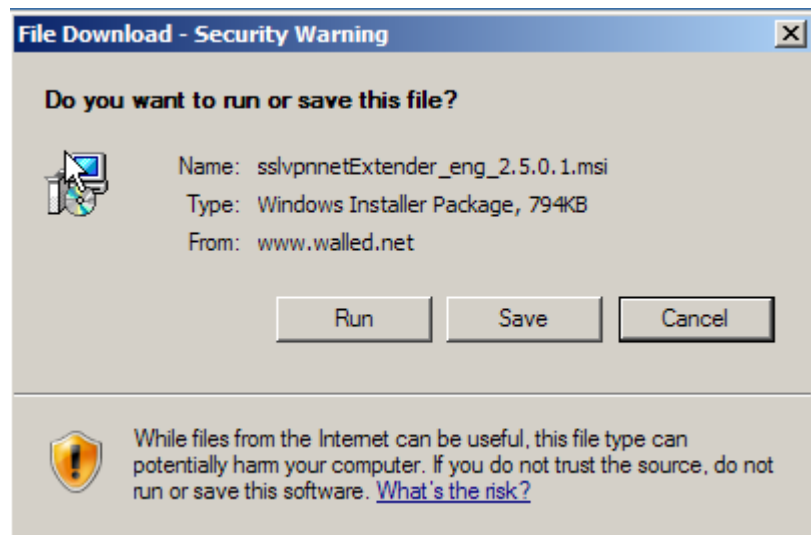
Install the SSL-VPN client from the link provided to you by your meeting organizer. Please note that your username and password will be uniquely yours for each meeting on a specific AliceStreet Conference Center. Should you not have immediate access to your SSL-VPN client, you can download from:

[http://www.alicestreet.com/ASCC\\_Software/SecureChannel/AliceStreetSecureChannelSSLvpnetExtender\\_eng\\_2.5.0.1.msi](http://www.alicestreet.com/ASCC_Software/SecureChannel/AliceStreetSecureChannelSSLvpnetExtender_eng_2.5.0.1.msi)

### 2.1 Installing the Secure Channel client



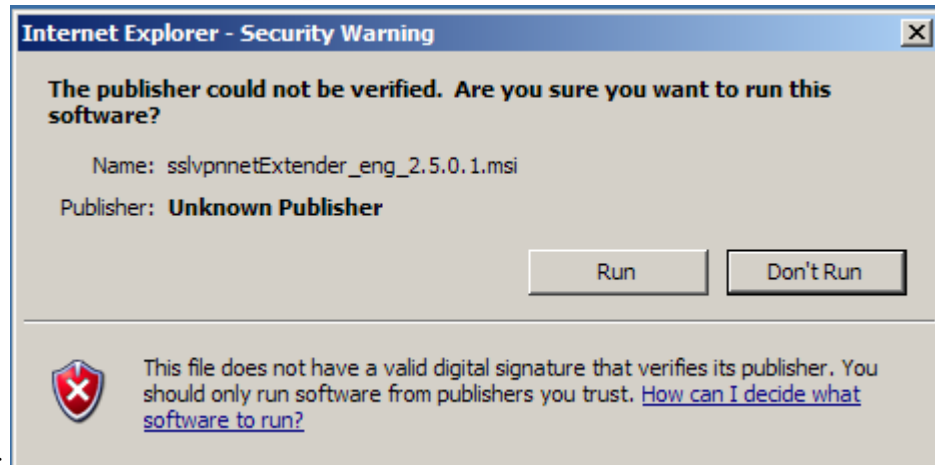
Double click on the Icon labelled:



Click Run or save:

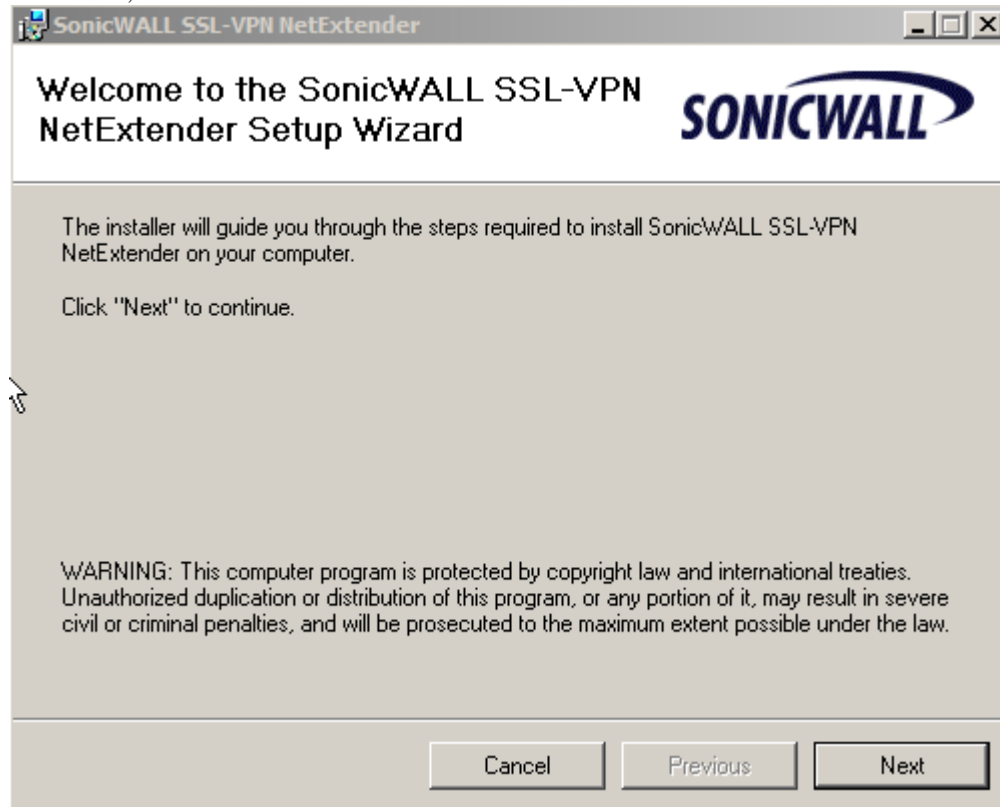
# AliceStreet Conference Center

A *real* conference room on your desktop



Click Run:

Click Next:



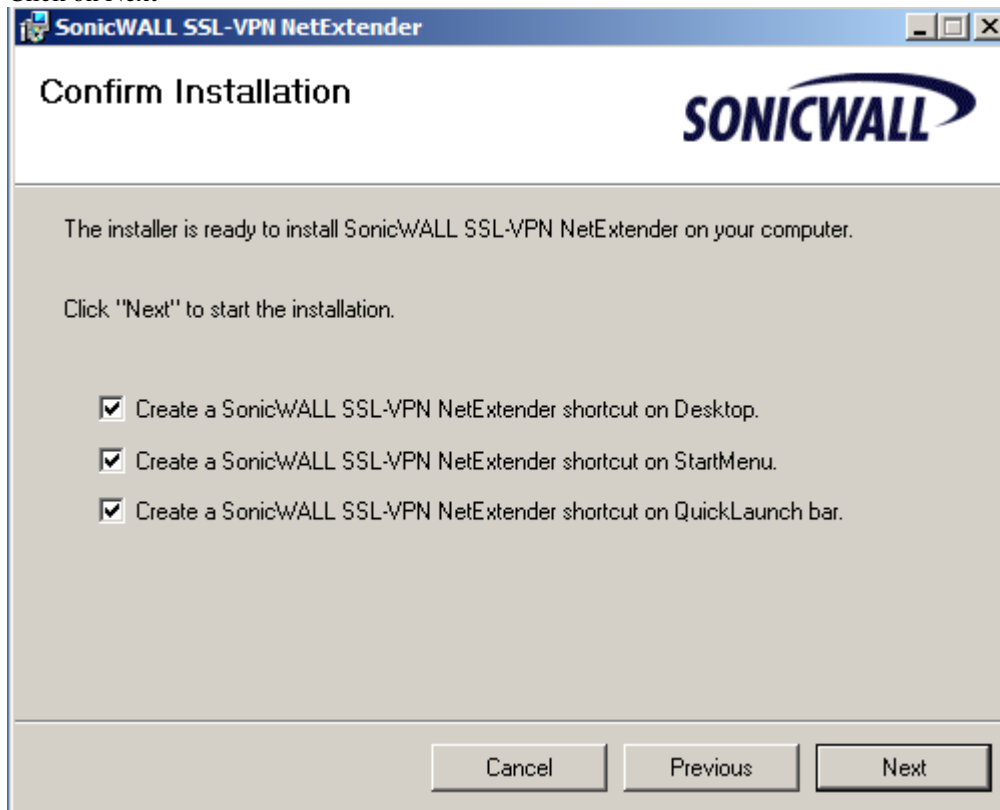
Click "I agree" and Next

# AliceStreet Conference Center

A *real* conference room on your desktop



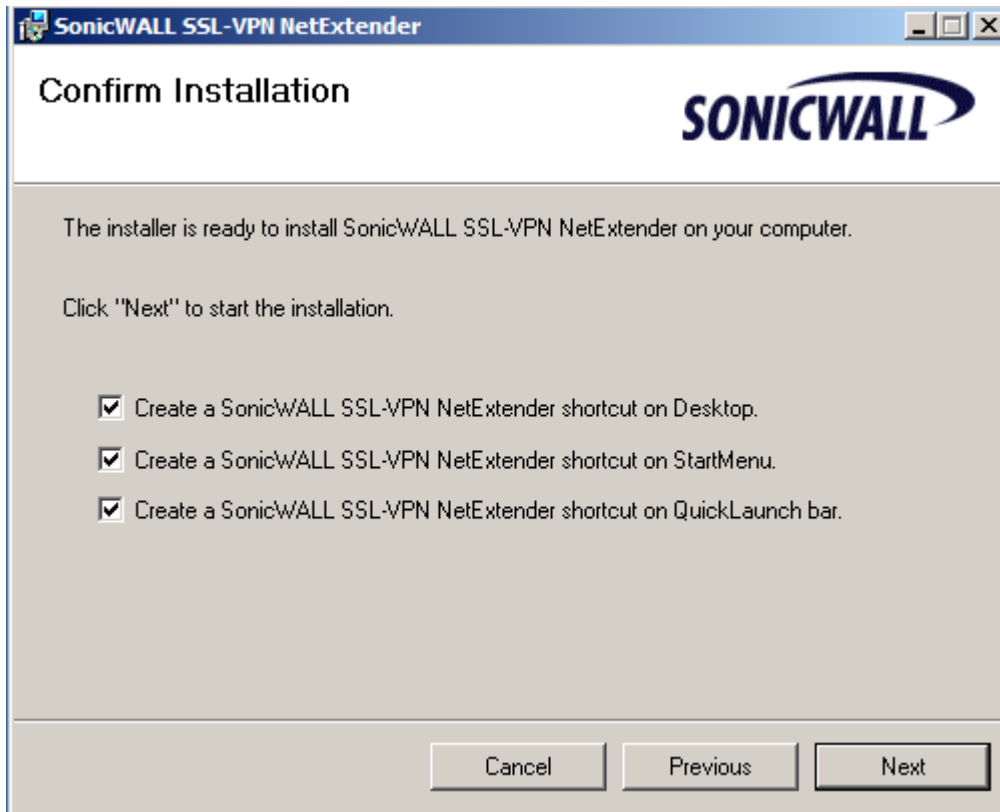
Click on Next



# AliceStreet Conference Center

A *real* conference room on your desktop

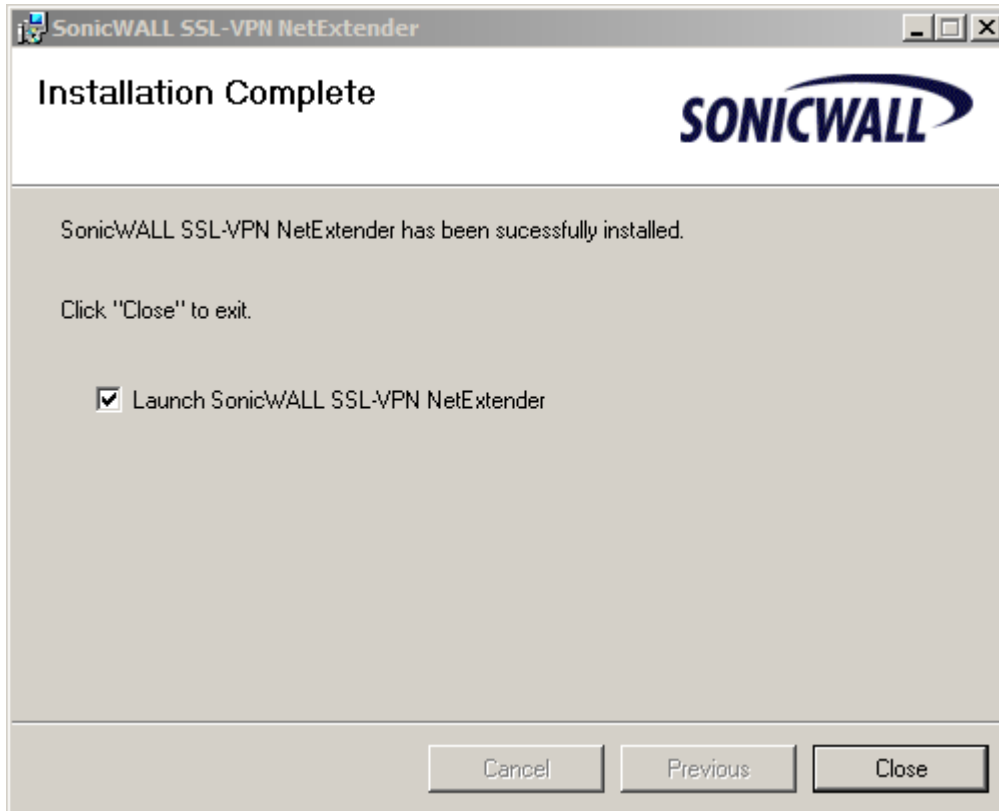
Click on Next



Click on Close

# AliceStreet Conference Center


A **real** conference room on your desktop



Note that you may be asked to restart your PC.

## 2.2 Connecting the Secure Channel client

If you are not already connected to an AliceStreet Conference Center using SecureChannel,

then click on the icon  **SonicWALL SSL-VPN NetExtender** and the following window will appear:

# AliceStreet Conference Center

A **real** conference room on your desktop



The image shows a screenshot of the SonicWALL SSL-VPN NetExtender application window. The window title is "SonicWALL SSL-VPN NetExtender". The main area contains the SonicWALL logo and the text "SSL-VPN NetExtender". Below this, there is a form with the following fields:

- SSL-VPN Server: [text input field]
- User name: [text input field]
- Password: [text input field]
- Domain: [text input field]

A "Connect" button is located below the form. At the bottom of the window, there is a dropdown menu with the text "Always ask for user name & password". The footer of the window contains the text "Copyright © 2007 SonicWALL, Inc."

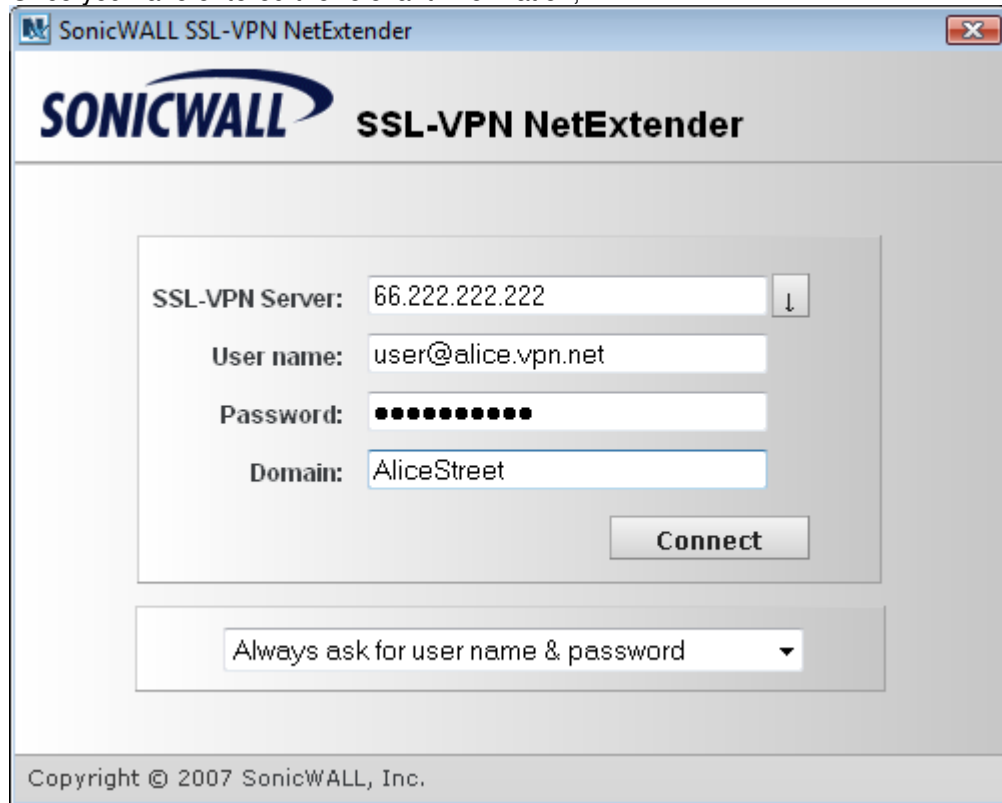
You will need the SSL-VPN server name from your host, in addition to your user name and password.

If you are using the AliceOnDemand Conference Manager (AoD-CM), your user name and password is the same as you registered with AoD CM. Please contact your meeting organizer, or your security administrator with any questions.

# AliceStreet Conference Center

A *real* conference room on your desktop

Once you have entered the relevant information,



The screenshot shows a window titled "SonicWALL SSL-VPN NetExtender". The window contains the SonicWALL logo and the text "SSL-VPN NetExtender". Below this, there is a form with the following fields:

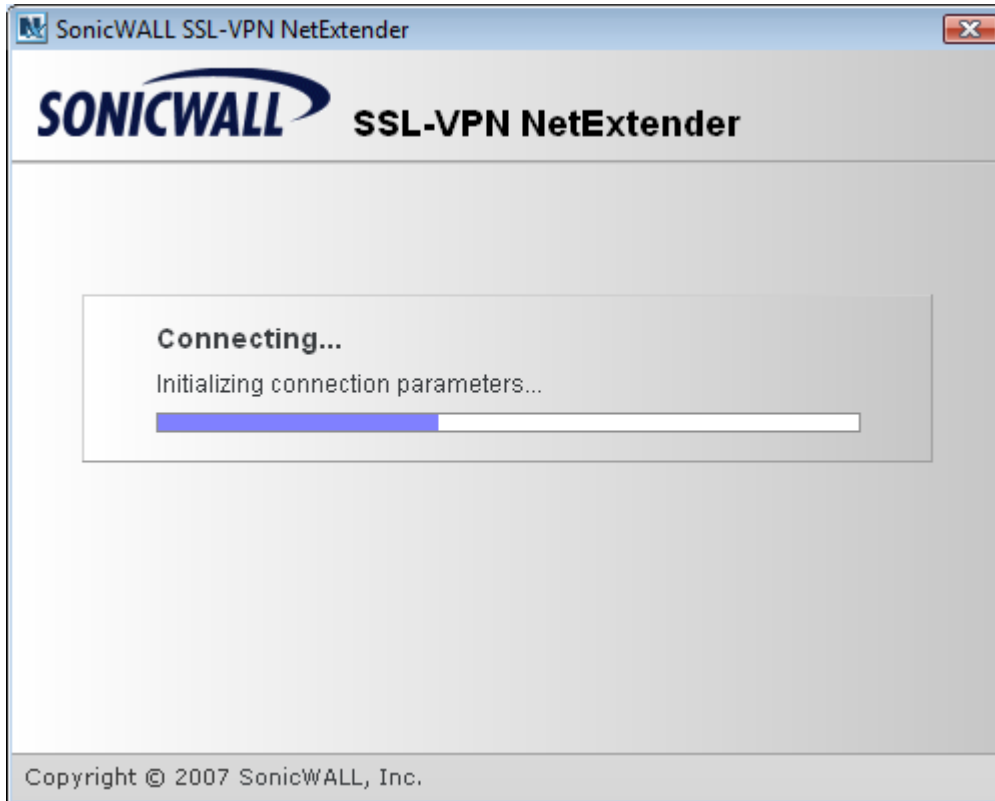
- SSL-VPN Server: 66.222.222.222
- User name: user@alice.vpn.net
- Password: [masked with 10 dots]
- Domain: AliceStreet

A "Connect" button is located to the right of the password field. Below the form, there is a dropdown menu with the text "Always ask for user name & password". At the bottom of the window, the copyright notice "Copyright © 2007 SonicWALL, Inc." is visible.

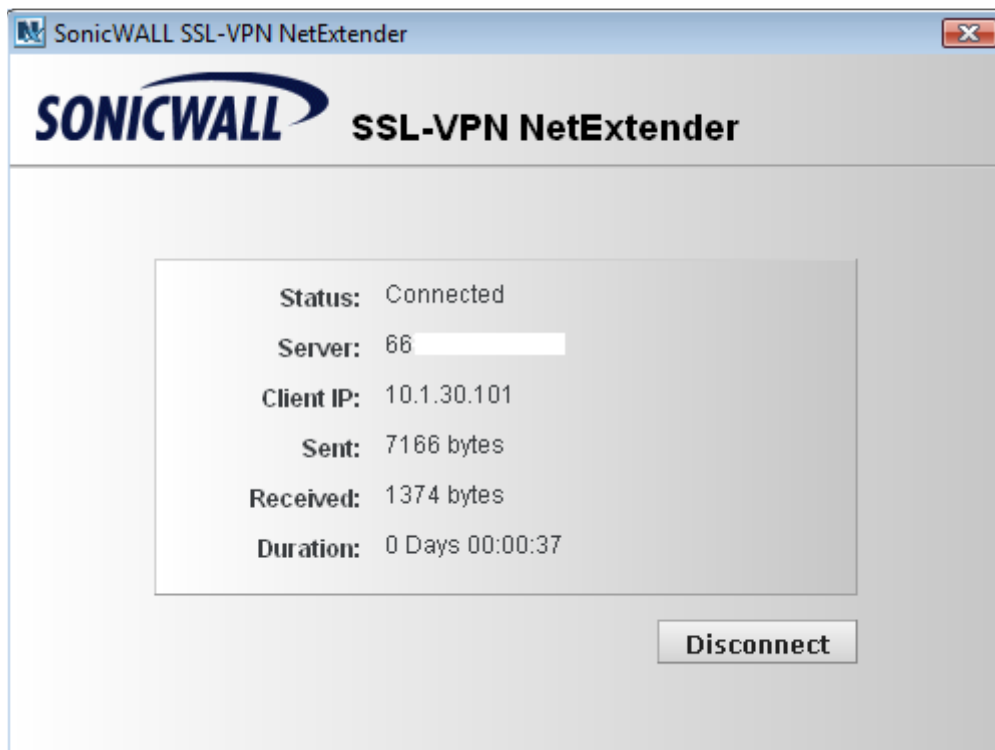
the following window will appear:

# AliceStreet Conference Center

A real conference room on your desktop



After verification and initialization, you will see:



# AliceStreet Conference Center


A real conference room on your desktop

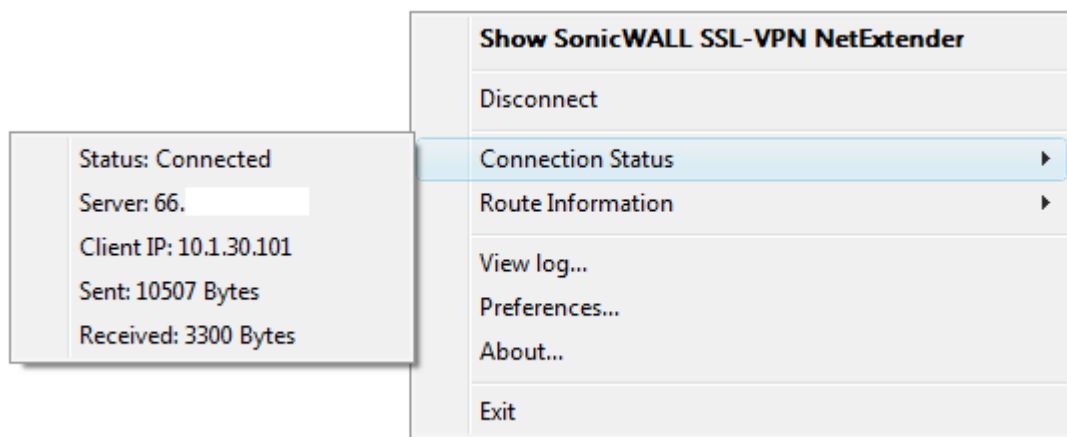
This verifies your Secure Channel is operating and you may connect to the meeting room URL you have been sent.

Remember, AliceStreet Secure Channel is designed to secure only the AliceStreet Conference Center application. This means your email and other vital day to day tools will work even while securely connected to an AliceStreet Conference.

## 2.3 Verifying your Secure Channel connection



You can further monitor your SSL VPN Secure Channel by clicking on the  in your task tray at the bottom left of your display. Once clicked, the following will display:



**End of section**